

Inter-Graduate School Program for Sustainable Development and Survivable Societies (Global Survivability Studies Program)



京都大学
KYOTO UNIVERSITY

Program for Leading Graduate Schools, MEXT
In the multidisciplinary field of Safety and Security

"Leading Graduate School (Super Doctor) " Educational Program in Global Survivability Studies

Program characteristics

In recent years, our global society has been experiencing a surge of large-scale natural disasters, sudden man-made disasters and accidents, growing regional environmental changes such as environmental degradation and infectious diseases, food security issues. In this program, 9 graduate schools and 3 research institutes from Kyoto University join forces to develop a new multidisciplinary field called Global Survivability Studies (GSS), and develop global experts who can contribute to social safety and security.

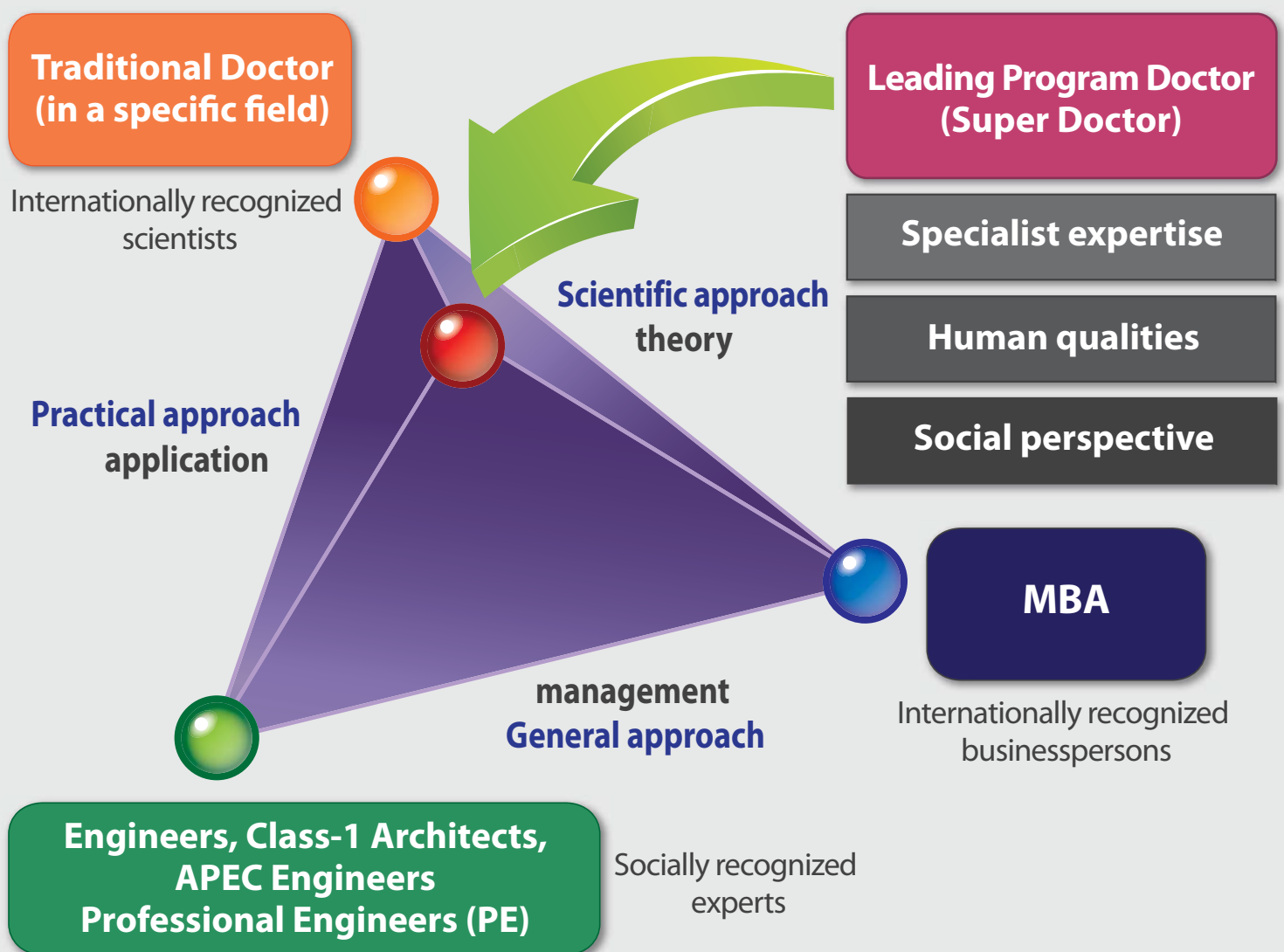


This 5-year graduate program provides an innovative multidisciplinary education in Global Survivability Studies in the field of Safety and Security, opportunities for international and real-world experiences, and develops the future experts of our global society.

What is a Leading Doctor (Super Doctor) ?

- 1) A person filled with the sense of mission and ethics necessary to overcome the many crisis humanity is facing, and to enrich human society and contribute to its well-being.
- 2) A person equipped with sound judgment and energy, able to implement appropriate measures based on their own specific expertise, and on a wide vision and a broad-based knowledge.

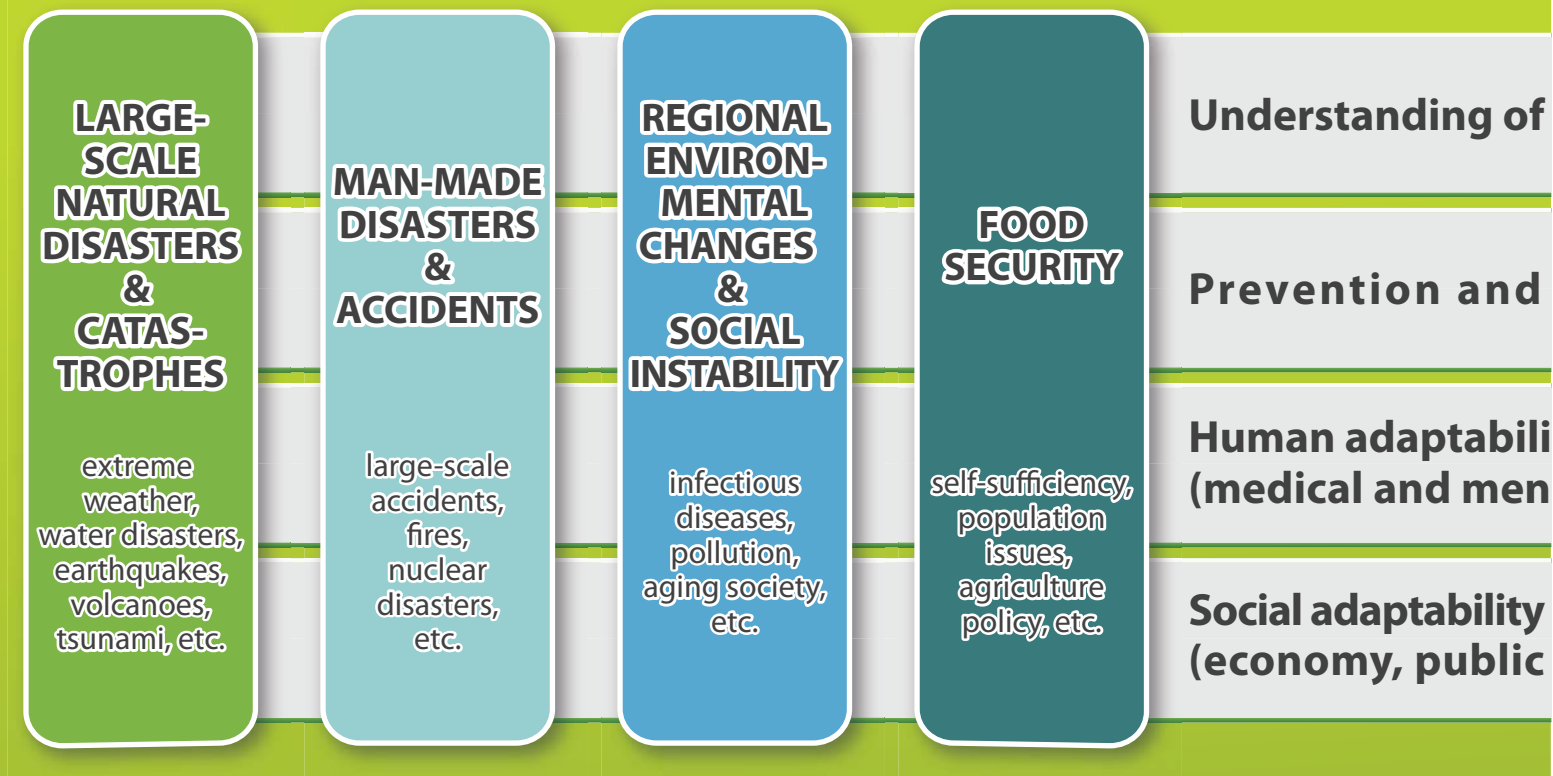
The Global Survivability Program provides a hands-on graduate education, based on Case Method (CM) and Problem Based Learning (PBL)



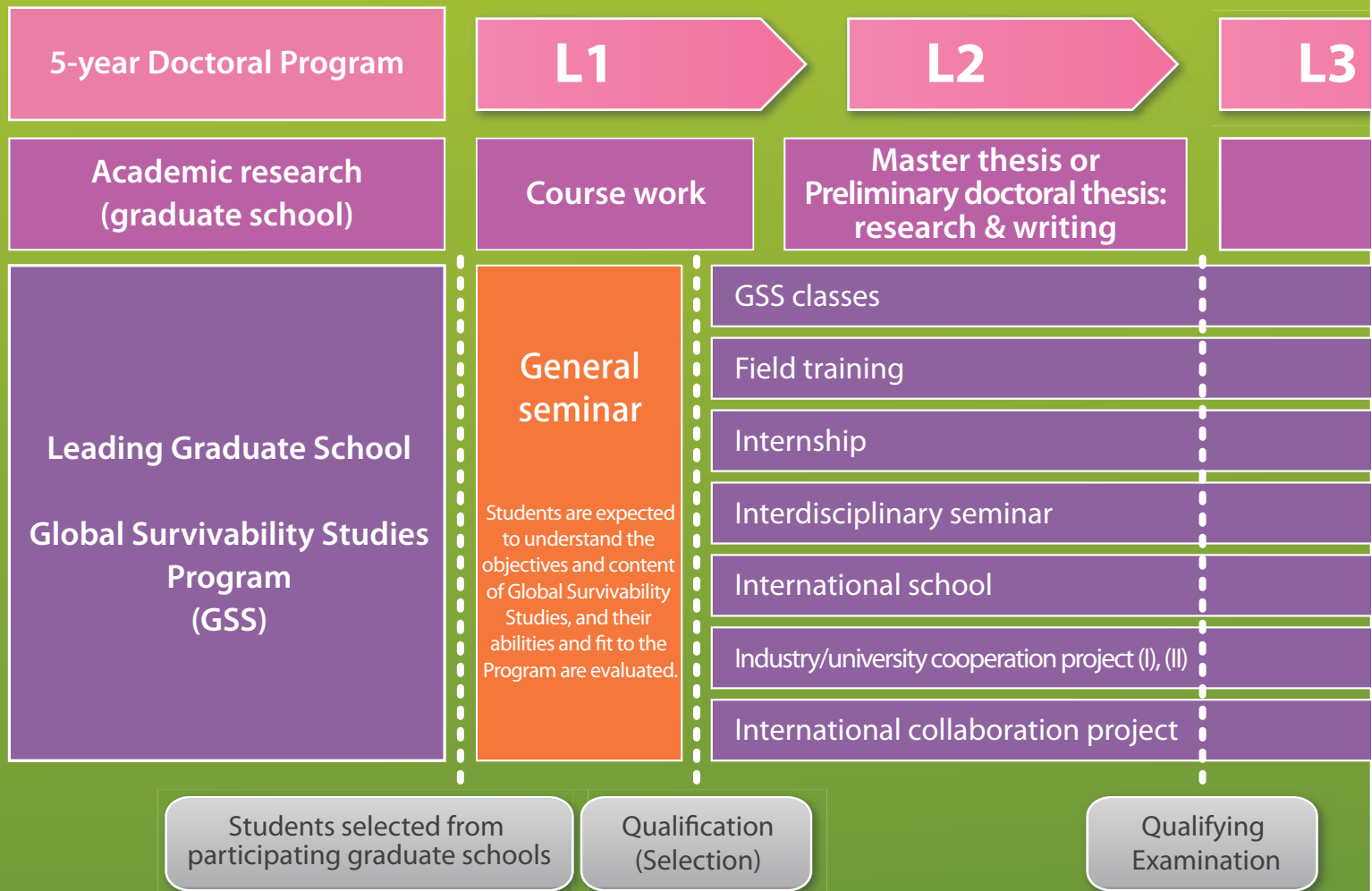
This program aims at producing:

- Academic leaders active in the field of social / safety system science, as high-level researchers and educators.
- Leaders in the field of international crisis management, active on the global scene, in international organizations.
- Leaders in the industry able to appropriately address disasters, accidents and economic crisis, providing a stable and consistent business management.
- Leaders at the local and national level who exercise their leadership in policy making regarding food, resources and energy safety.
- Science communicators who convey correct information based on their scientific knowledge, limiting public anxiety.
- New business leaders who develop new technologies and methodologies in the field of safety and security.

Scope of Global Survivability Studies in the field of



Global Survivability Studies Program (GSS) 5-year



How to enroll in the Global Survivability Studies Program (GSS) ?

Students who have graduated from a Japanese university (4-year undergraduate program), or who have an equivalent qualification, and who are enrolled in any of the graduate schools and departments involved in the program can apply. Nationality, gender and age

Safety and Security

the mechanisms of natural and social phenomena

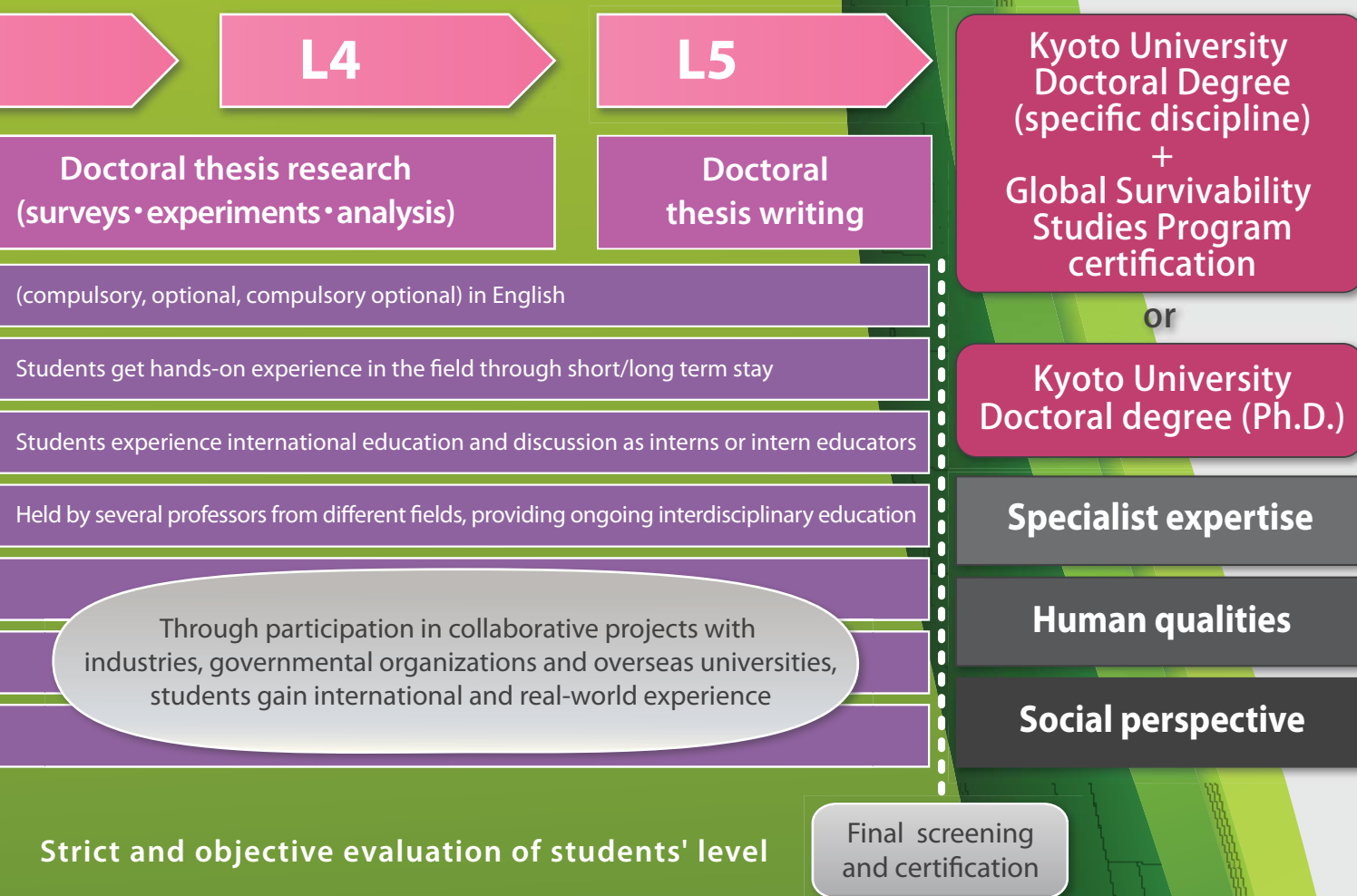
resilience based on scientific knowledge

ty
tal care, psychology, life-style, rehabilitation)

policies, area studies, restoration and recovery)



curriculum flow



are no object. The first semester (April to September) of the first academic year is set as the Global Survivability Studies (GSS) Preparatory Course, during which applicants will attend the classes as program candidates. They will then be evaluated for admission and those selected will be officially registered as program students from October of the same year, and attend the course classes. Fellowships and research grants are available, in order to allow students to focus solely on their studies and research.



Graduate schools and Research Institutes involved in the Inter-Graduate School Unit for Sustainable Development and Survivable Societies

| | |
|---|---|
| Graduate School of Education | All departments (Department of Education, Department of Clinical Education) |
| Graduate School of Economics | Department of Economics |
| Graduate School of Science | Division of Earth and Planetary Sciences |
| Graduate School of Medicine | Department of Medicine and Medical Science, School of Public Health |
| Graduate School of Engineering | Department of Civil and Earth Resources Engineering, Department of Urban Management, Department of Environmental Engineering, Department of Architecture and Architectural Engineering, Department of Mechanical Engineering and Science |
| Graduate School of Agriculture | All departments (Division of Agronomy and Horticultural Science, Division of Forest and Biomaterials Science, Division of Applied Life Sciences, Division of Applied Biosciences, Division of Environmental Science and Technology, Division of Natural Resource Economics, Division of Food Science and Biotechnology) |
| Graduate School of Asian and African Area Studies | All departments (Division of Southeast Asian Area Studies, Division of African Area Studies, Division of Global Area Studies) |
| Graduate School of Informatics | Department of Social Informatics, Department of Communications and Computer Engineering |
| Graduate School of Global Environmental Studies | All departments (Doctorate Program in Global Environmental Studies, Doctorate Program in Environmental Management) |
| Disaster Prevention Research Institute | |
| Research Institute for Sustainable Humanosphere | |
| Center for Southeast Asian Studies | |

GSS

Global Survivability Studies

About the Program for Leading Graduate Schools

The Program for Leading Graduate Schools aims at mentoring talented students into future leaders, armed with a broad view and creative thinking, active globally in industry, academia and government. In order to do so, the Program for Leading Graduate Schools mobilizes high-level educators and students and the participation of industry, academia and government, supports a radical reform of graduate education that develops interdisciplinary world-class 5-year graduate programs, and promotes the development of graduate schools befitting their status of highest educational institution. (From the application guidelines for the Program for Leading Graduate Schools, 2011)

Contact

Kyoto University

Center for the Promotion of Interdisciplinary Education and Research
Inter-Graduate School Unit for Sustainable Development and Survivable Societies

KYOTO UNIVERSITY HIGASHI ICHIJOKAN,
1 Yoshida-Nakaadachi-cho, Sakyo-ku, Kyoto 606-8306, JAPAN
TEL: 075-762-2197 <http://www.gss.sals.kyoto-u.ac.jp/>

2015 edition